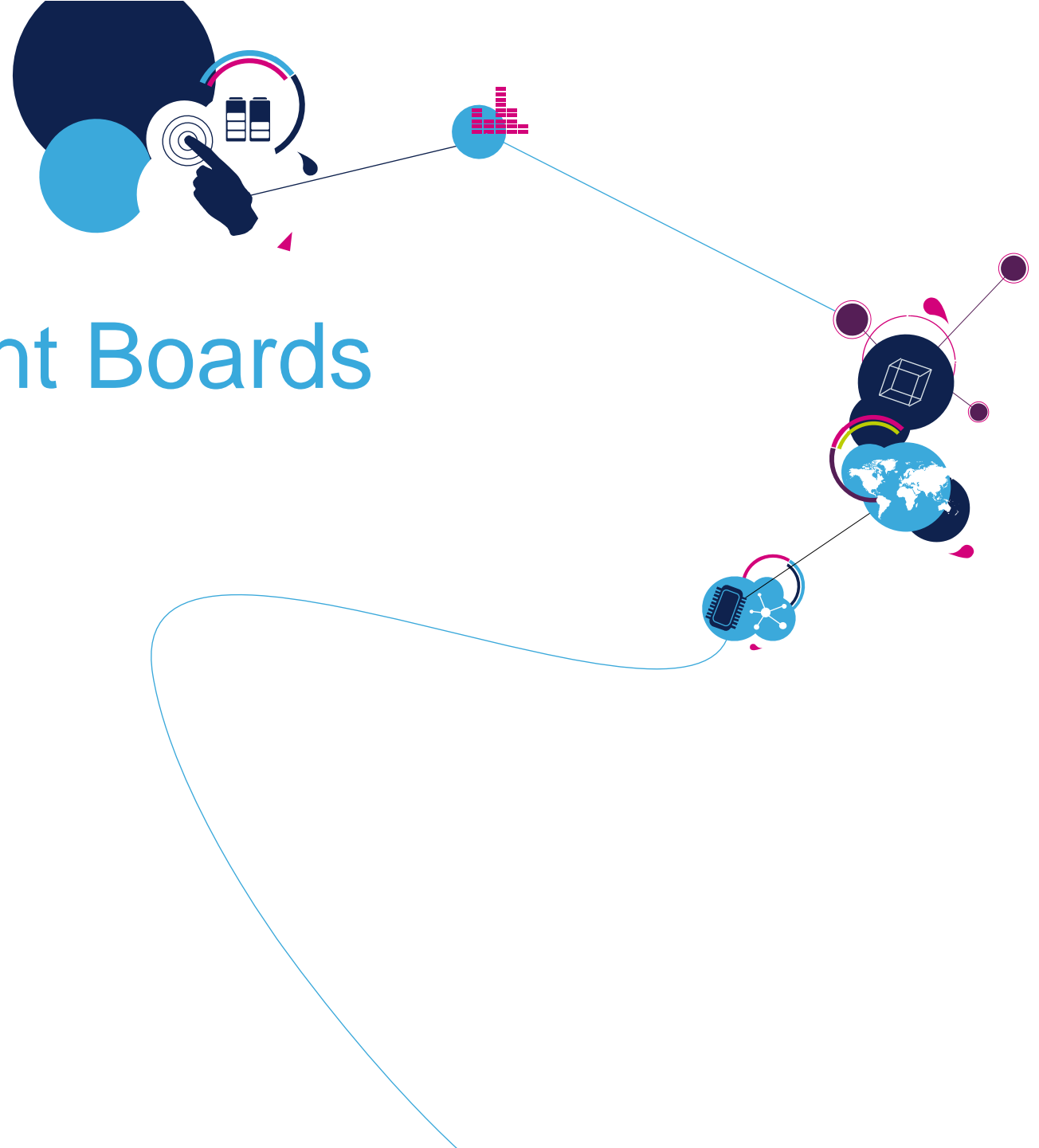


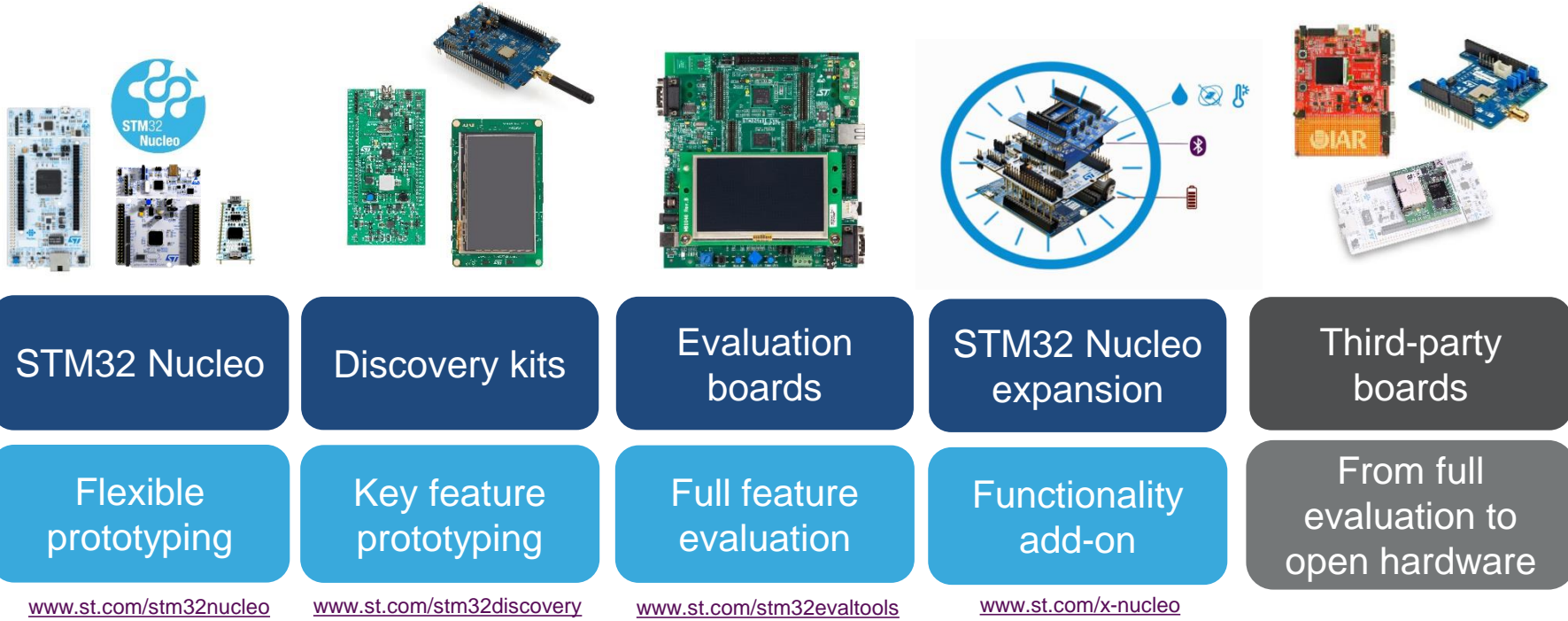
# STM32 Development Boards Portfolio

Ecosystem Marketing

Q1'2018



# Development tools overview

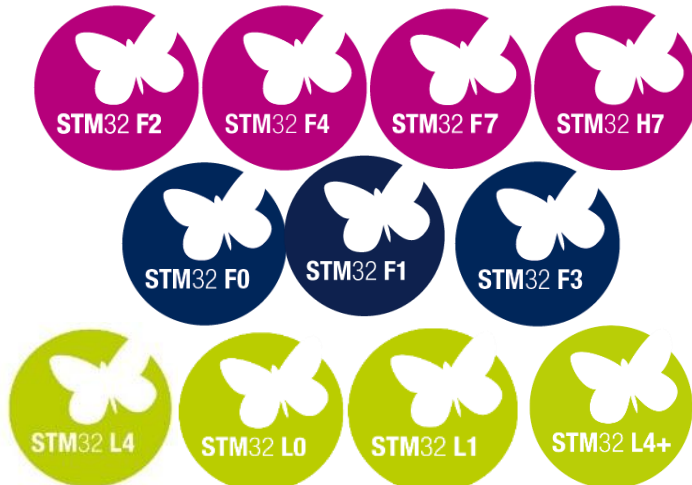


[www.st.com/stm32nucleo](http://www.st.com/stm32nucleo)

[www.st.com/stm32discovery](http://www.st.com/stm32discovery)

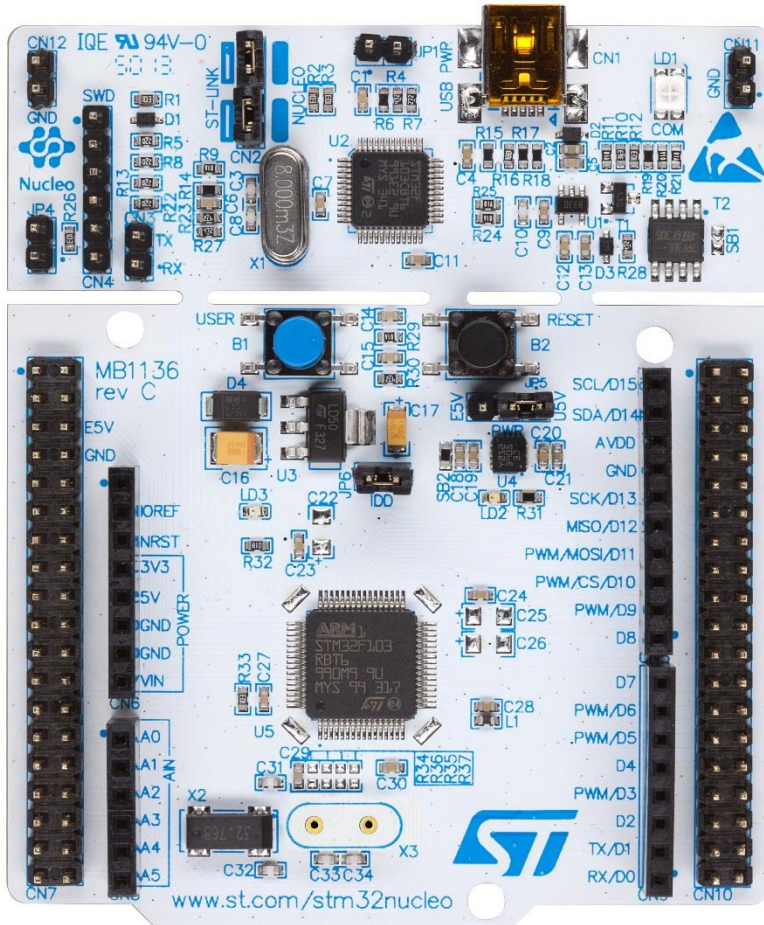
[www.st.com/stm32evaltools](http://www.st.com/stm32evaltools)

[www.st.com/x-nucleo](http://www.st.com/x-nucleo)





# STM32 Nucleo key assets



Flexible prototyping

Unlimited expansion capabilities

Simply show the whole STM32 portfolio to the communities





# STM32 Nucleo form choices



(on selected MCU configurations)

Ethernet

\*\*\*

USB

\*\*\*

ST Zio  
(Uno extended)

\*\*\*

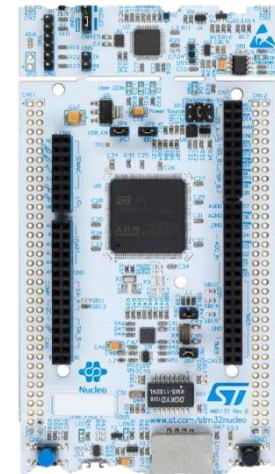
Arduino Uno  
ST morpho

\*\*

\*\*

Arduino Nano

\*



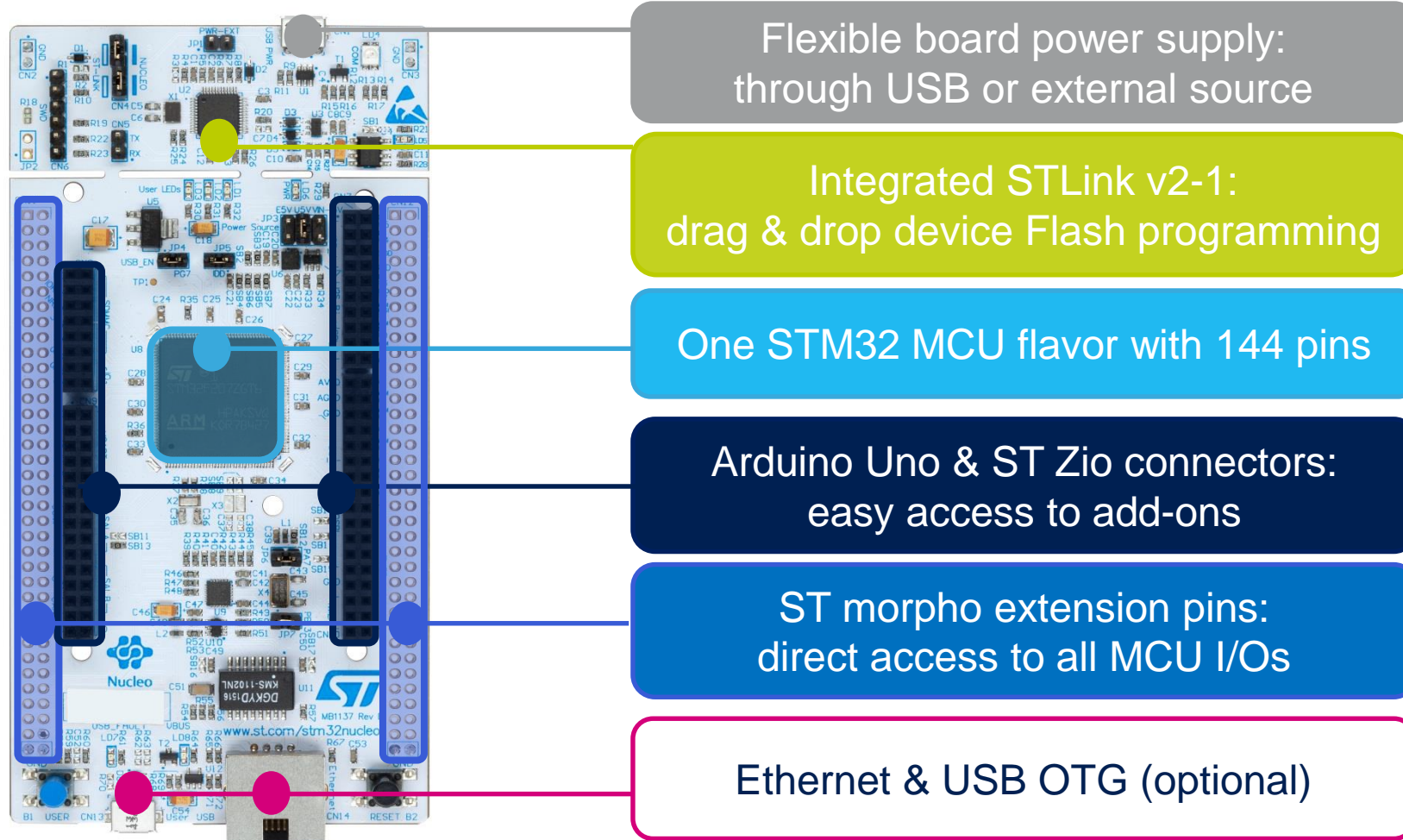
Nucleo-32  
32-pin MCU

Nucleo-64  
64-pin MCU

Nucleo-144  
144-pin MCU



# STM32 Nucleo-144 structure





## Stretching boundaries

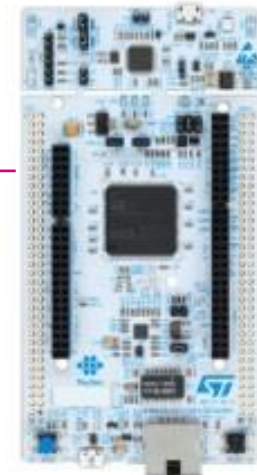
NUCLEO-L496ZG-P



STM32H7 Nucleo without SMPS

**High-performance**  
STM32H743 MCU  
CoreMark 2020  
Price \$23

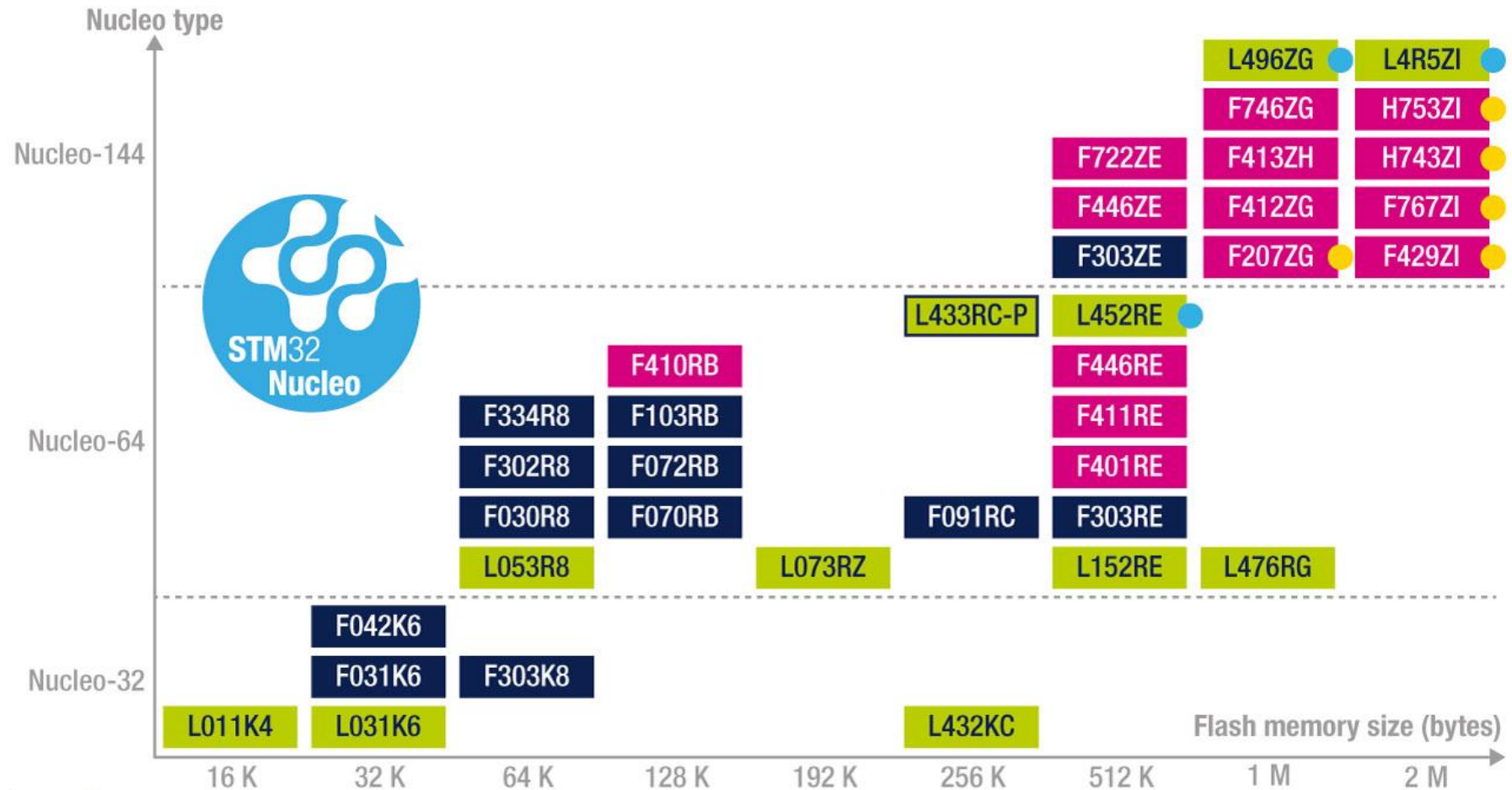
NUCLEO-H743ZI



STM32L4 Nucleo with SMPS

**Ultra-lower-power**  
STM32L496 MCU  
with external SMPS  
ULPMark-CP 217  
Price \$20

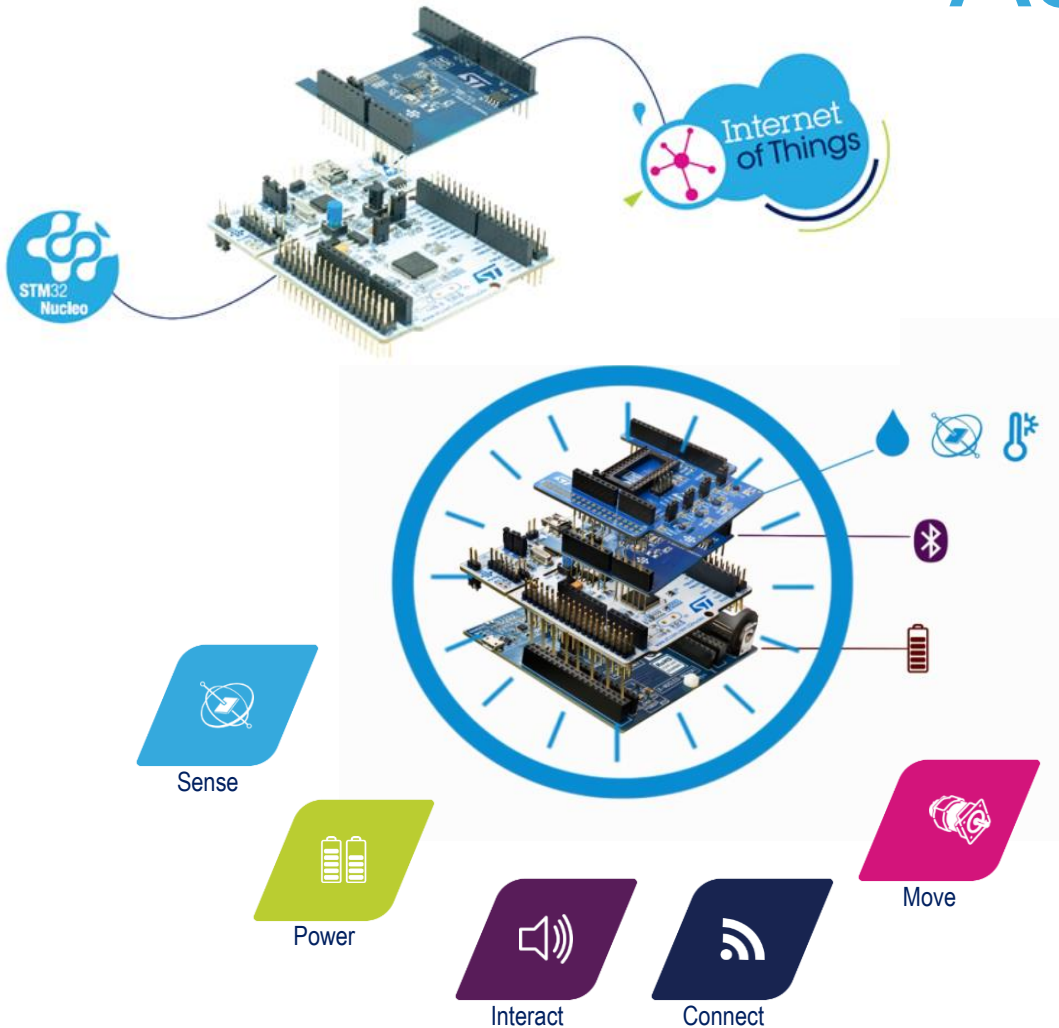
# STM32 Nucleo portfolio



**Legend:**

- Mainstream
- Ultra-low-power
- High-performance
- Ethernet 10/100 Mbps
- SMPS version
- SMPS version available (except for L4R5ZI planned in Q1-2018)

# Association with shields



Specialized functionality add-on

Smooth integration with STM32Cube software library

Multiple IDEs (Mbed™, IAR, Arm®...)



# Nucleo expansion boards from ST

## Sensors and analog



**X-NUCLEO-IKS01A2**  
MOTION AND ENVIRONMENTAL SENSORS



**X-NUCLEO-6180XA1**  
PROXIMITY AND AMBIENT LIGHT SENSOR



**X-NUCLEO-53L0A1**  
PROXIMITY SENSOR



**X-NUCLEO-CCA02M1**  
DIGITAL MICROPHONES

## Translate



**X-NUCLEO-IKA01A1**  
MULTIFUNCTIONAL EXPANSION BASED ON OPERATIONAL AMPLIFIERS

## Communication



**X-NUCLEO-IDB05A1**  
BLUETOOTH LOW ENERGY



**X-NUCLEO-NFC04A1**  
DYNAMIC NFC TAG

**X-NUCLEO-NFC05A1**  
NFC CARD READER



**X-NUCLEO-PLM01A1**  
POWER LINE COMMUNICATION



**X-NUCLEO-GNSS1A1**  
ASSISTED GNSS



**X-NUCLEO-CCA01M1**  
SOUND TERMINAL

## Motor drive



**X-NUCLEO-IHM01A1**  
STEPPER MOTOR DRIVER



**X-NUCLEO-IHM02A1**  
TWO AXIS STEPPER MOTOR DRIVER



**X-NUCLEO-IHM03A1**  
HIGH POWER STEPPER MOTOR DRIVER



**X-NUCLEO-IHM04A1**  
DUAL BRUSH DC MOTOR DRIVER



**X-NUCLEO-IHM07M1**  
STEPPER MOTOR DRIVER



**X-NUCLEO-IHM06A1**  
LOW VOLTAGE STEPPER MOTOR DRIVER



**X-NUCLEO-IHM05A1**  
BIPOLAR STEPPER MOTOR DRIVER



**X-NUCLEO-IHM12A1**  
LOW VOLTAGE DUAL BRUSH DC MOTOR DRIVER



**X-NUCLEO-LED61A1**  
LED DRIVER



**X-NUCLEO-IPS02A1**  
INTELLIGENT POWER SWITCH

# STM32 Power Shield key assets

10

Accurate power profiling



Ultra-low power consumption measurements

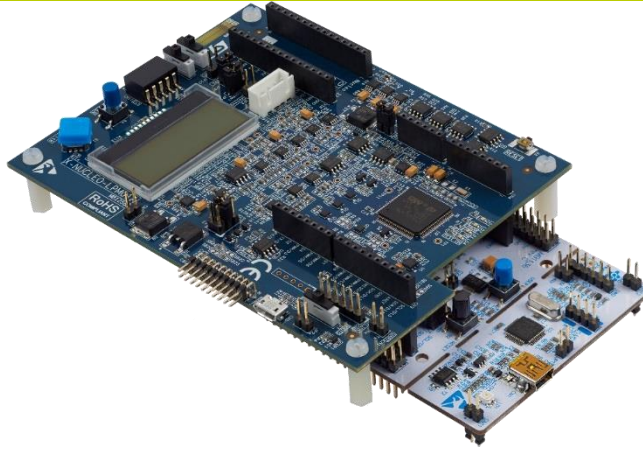
Compatible with all Nucleo form factors (32 / 64 / 144)

Graphical analysis with STM32CubeMonitor-Power tool

Custom test sessions with scripting

Reference tool for EEMBC ULPMark benchmark

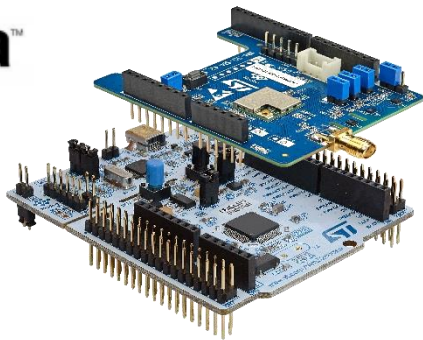
## X-NUCLEO-LPM01A



- Ultra-low-power consumption measurements:
  - Supply target board from 1.8 to 3.3V
  - Dynamic current from **100 nA to 50 mA**
  - Static current from **1 nA to 200 mA**
  - Accuracy approximately **2%**
- Intuitive user experience:
  - Two operating modes (stand-alone or PC-controlled)
  - Graphical PC application (reference: [STM32CubeMonPwr](#))
- Resale price (RRP) \$70
- Official EEMBC Energy Monitor v2.0 :
  - Direct computation of ULPMark scores

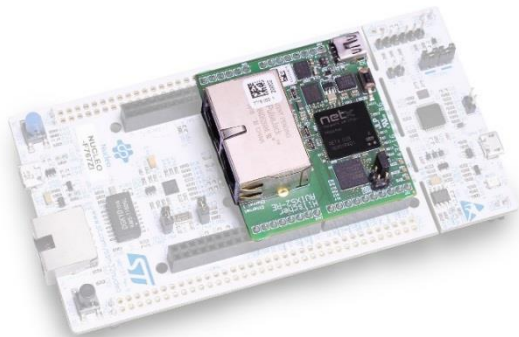


# Nucleo expansion boards from 3rd parties



**I-NUCLEO-LRWAN1**  
By USI®

**LoRaWAN communication**  
Frequency range from 868 to 930 MHz  
LoRaWAN-compliant protocol stack



**I-NUCLEO-NETX**  
By Hilscher

**Industrial Ethernet protocols**  
PROFINET®, Ethernet/IP™, EtherCAT,  
POWERLINK, Sercos®, and Modbus®



# Latest Discovery kits



STM32L4R9I-DISCO



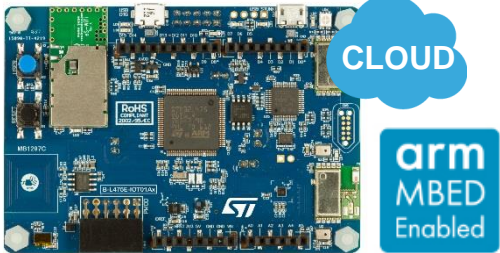
STM32F413H-DISCO



STM32F769I-DISCO



P-L496G-CELL01 & P-L496G-CELL02



B-L475E-IOT01A



B-L072Z-LRWAN1





# Discovery kit portfolio 1/3



Part number	MCU	USB	Audio	Display	Connectivity	Expansion	arm MBED
<a href="#">32F0308DISCOVERY</a>	STM32F030					Proprietary	Mbed
<a href="#">STM32F0DISCOVERY</a>	STM32F051					Proprietary	
<a href="#">32F072BDISCOVERY</a>	STM32F072	x				Proprietary	
<a href="#">STM32VLDISCOVERY</a>	STM32F100					Proprietary	
<a href="#">STM32F3DISCOVERY</a>	STM32F303	x				Proprietary	
<a href="#">32F3348DISCOVERY</a>	STM32F334					Proprietary	Mbed
<a href="#">32L0538DISCOVERY</a>	STM32L053	x		E-paper		Proprietary	
<a href="#">32L100CDISCOVERY</a>	STM32L100					Proprietary	
<a href="#">32L152CDISCOVERY</a>	STM32L152			LCD		Proprietary	
<a href="#">32L476GDISCOVERY</a>	STM32L476	OTG	x	LCD		Proprietary	Mbed OS
<a href="#">32L496GDISCOVERY</a>	STM32L496	OTG	x	Color LCD 240x240	Add-on (optional)	Arduino Uno, Pmod, STmod+, MikroBus, Grove	
<a href="#">32L4R9IDISCOVERY</a>	STM32L4R9	OTG	x	Color AMOLED 360x360	Add-on (optional)	Arduino Uno, Pmod, STmod+, MikroBus, Grove	

# Discovery kit portfolio 2/3



Part number	MCU	USB	Audio	Display	Connectivity	Expansion	arm MBED
<a href="#"><u>STM32F4DISCOVERY</u></a>	STM32F407	OTG	x			Proprietary	
<a href="#"><u>32F411EDISCOVERY</u></a>	STM32F411	OTG	x			Proprietary	
<a href="#"><u>32F412GDISCOVERY</u></a>	STM32F412	OTG	x	Color LCD 240x240	Add-on (optional)	Arduino Uno	
<a href="#"><u>32F413HDISCOVERY</u></a>	STM32F413	OTG	x	Color LCD 240x240	Wi-Fi	Arduino Uno	Mbed OS
<a href="#"><u>32F429IDISCOVERY</u></a>	STM32F429	OTG		Color LCD QVGA	Add-on (optional)	Arduino Uno	Mbed OS
<a href="#"><u>32F469IDISCOVERY</u></a>	STM32F469	OTG	x	Color LCD 800x480	Add-on (optional)	Arduino Uno	Mbed OS
<a href="#"><u>32F723EDISCOVERY</u></a>	STM32F723	OTG HS	x	Color LCD 240x240	Add-on (optional)	Arduino Uno, Pmod, STMod+, MikroBus, Grove	
<a href="#"><u>32F746GDISCOVERY</u></a>	STM32F746	OTG HS	x	Color LCD 480x272	Ethernet	Arduino Uno	Mbed OS
<a href="#"><u>32F769IDISCOVERY</u></a>	STM32F769	OTG HS	x	Color LCD 800x480	Ethernet	Arduino Uno	Mbed OS

# Discovery kit portfolio 3/3



Part number	MCU	Description	Key features	Expansion	arm MBED
<a href="#">B-L072Z-LRWAN1</a>	STM32L072	All-in-one low-power wireless node	LoRa, Sigfox, WMBus AAA-battery operation	Arduino Uno, ST morpho	Mbed OS
<a href="#">B-L475E-IOT01A</a>	STM32L475	All-in-one IoT node with low-power connectivity & multiway sensing	BLE, SubGHz, NFC, Wi-Fi, Sensors (digital microphone, 9-axis navigation, pressure, humidity, temperature, proximity/gesture detection)	Arduino Uno, Pmod	Mbed OS
<a href="#">P-L496G-CELL01</a>	STM32L496	Worldwide Cellular IoT node 2G/3G pentaband	7.2 Mbps downlink, 5.76 Mbps uplink, eSIM and MicroSIM, 3-month dataplan included	Arduino Uno, Pmod, STmod+, MikroBus, Grove	
<a href="#">P-L496G-CELL02</a>	STM32L496	Worldwide Cellular IoT node LTE cat M1 / cat NB1 / EGPRS pentaband	300 Kbps downlink, 375 Kbps uplink, eSIM and MicroSIM, 3-month dataplan included	Arduino Uno, Pmod, STmod+, MikroBus, Grove	



[I-CUBE-LRWAN](#)

LoRaWAN-compliant software expansion for STM32Cube



[X-CUBE-SFOX](#)

Sigfox-compliant software expansion for STM32Cube



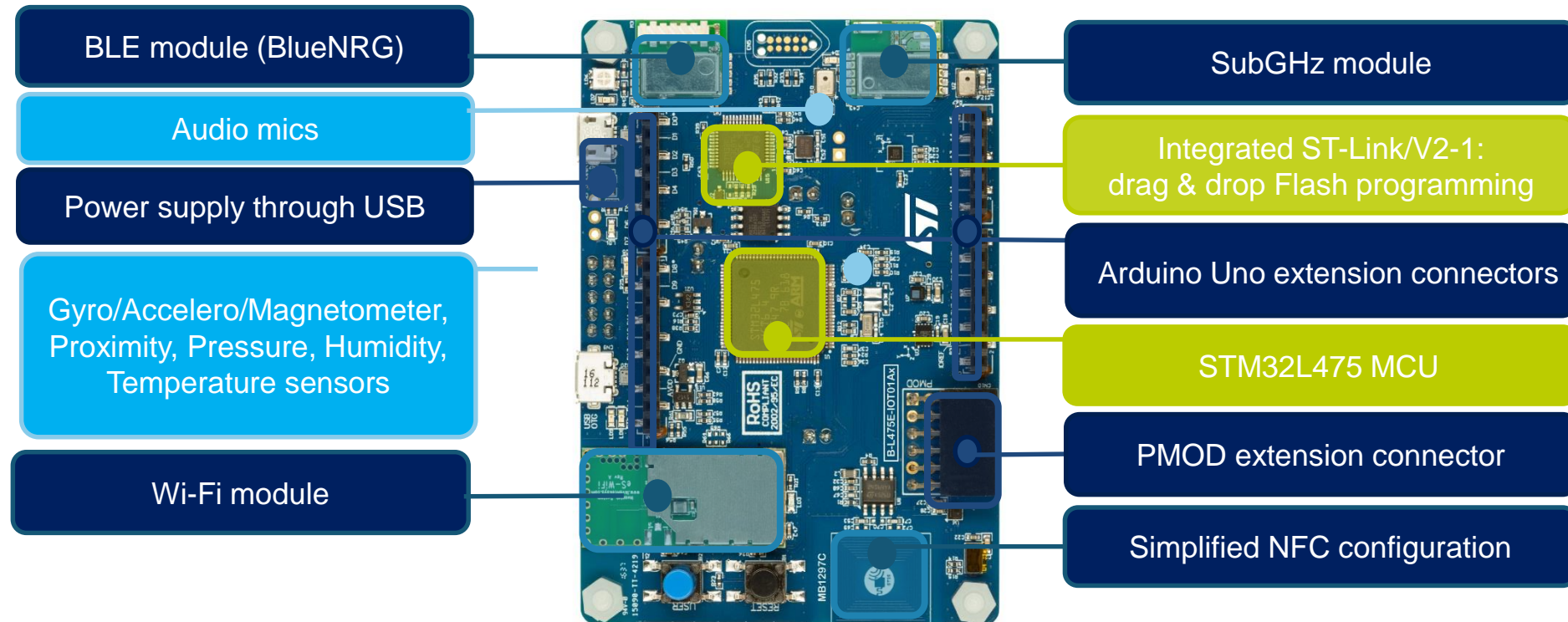
[X-CUBE-CLOUD](#)

Cloud connectors as expansion for STM32Cube (Amazon Web Services, Microsoft Azure, IBM Watson)



# STM32L4 Discovery IoT node...

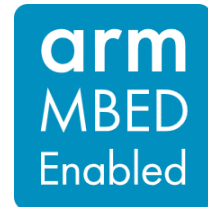
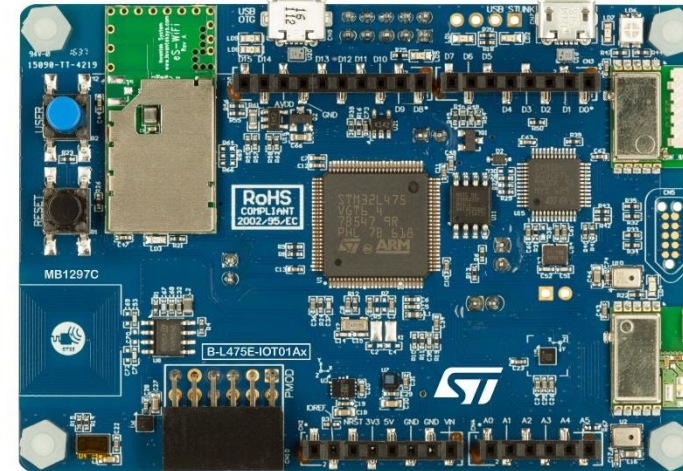
Multi-link communication, multiway sensing



B-L475E-IOT01A

# ...delivers user-friendly cloud access

- Direct connection to cloud services
- Low-power long-range communication
- Environmental awareness: humidity, pressure, temp
- Detection hub: motion, proximity, audio
- Direct support of communities



Cloud

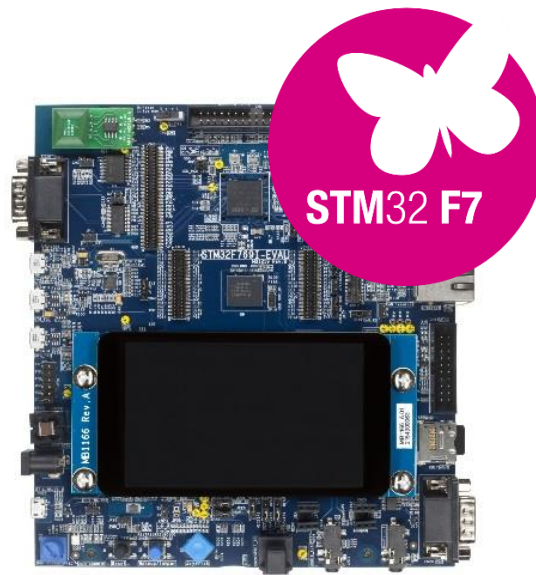
Cloud STM32Cube Expansion Packages



# Latest Evaluation boards



STM32L4R9I-EVAL



STM32F769I-EVAL



STM32H743I-EVAL

# Evaluation board portfolio

## Mainstream



## Ultra-low-power

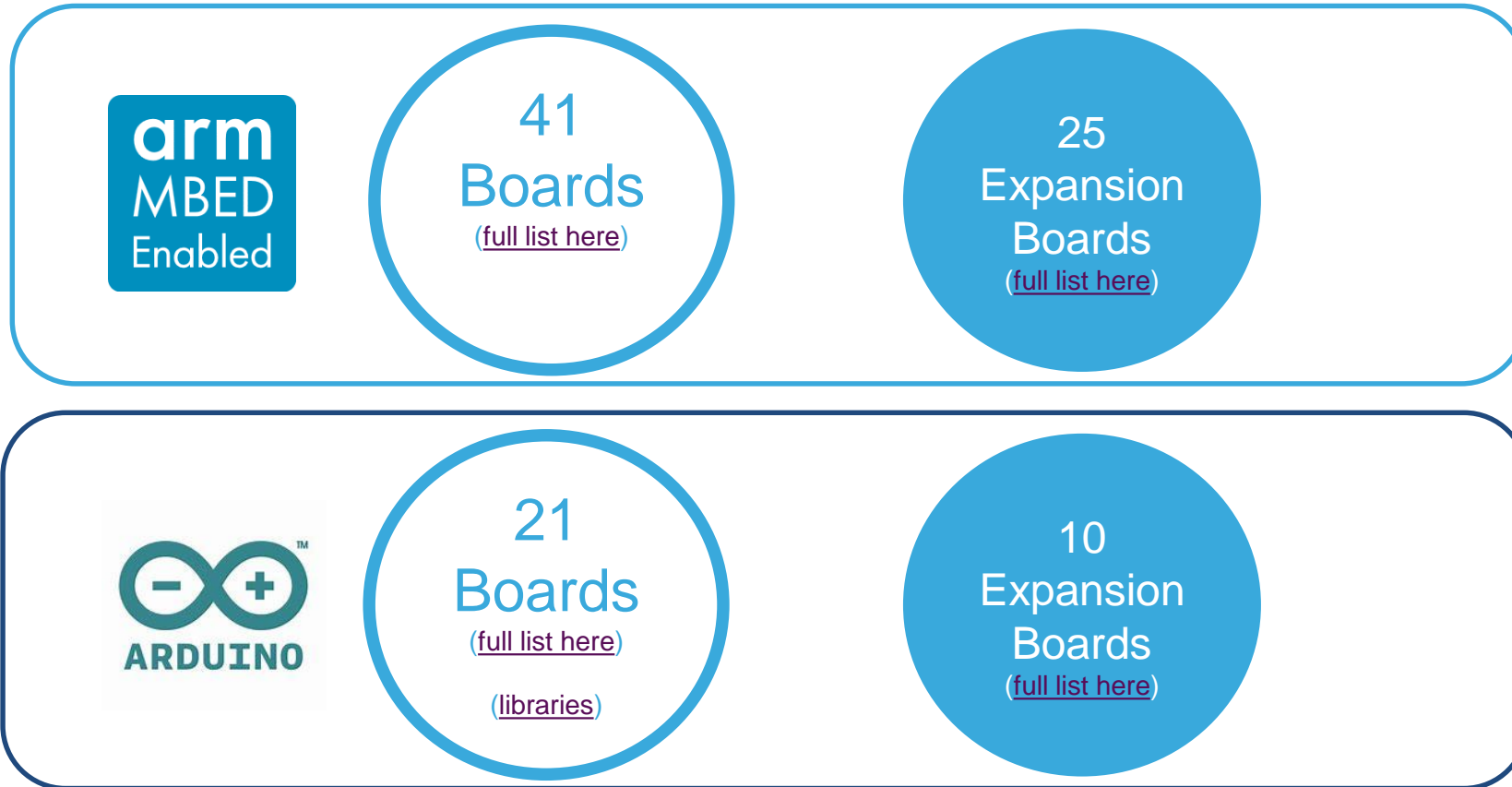


## High-performance



Part number	MCU	Part number	MCU	Part number	MCU	Part number	MCU
<a href="#">STM32072B-EVAL</a>	STM32F072	<a href="#">STM32L073Z-EVAL</a>	STM32L073	<a href="#">STM3220G-EVAL</a>	STM32F207	<a href="#">STM32746G-EVAL</a>	STM32F746
<a href="#">STM32091C-EVAL</a>	STM32F091	<a href="#">STM32L152D-EVAL</a>	STM32L152	<a href="#">STM3221G-EVAL</a>	STM32F217	<a href="#">STM32756G-EVAL</a>	STM32F756
<a href="#">STM32100E-EVAL</a>	STM32F100	<a href="#">STM32L476G-EVAL</a>	STM32L476	<a href="#">STM3240G-EVAL</a>	STM32F407	<a href="#">STM32F769I-EVAL</a>	STM32F769
<a href="#">STM3210E-EVAL</a>	STM32F103	<a href="#">STM32L4R9I-EVAL</a>	STM32L4R9	<a href="#">STM3241G-EVAL</a>	STM32F417	<a href="#">STM32F779I-EVAL</a>	STM32F779
<a href="#">STM3210C-EVAL</a>	STM32F107			<a href="#">STM32429I-EVAL</a>	STM32F429	<a href="#">STM32H743I-EVAL</a>	STM32H743
<a href="#">STM32303E-EVAL</a>	STM32F303			<a href="#">STM32439I-EVAL</a>	STM32F439	<a href="#">STM32H753I-EVAL</a>	STM32H753
<a href="#">STM32373C-EVAL</a>	STM32F373			<a href="#">STM32446E-EVAL</a>	STM32F446		
				<a href="#">STM32479I-EVAL</a>	STM32F479		

# STM32 Boards contribute to Communities



# Releasing your creativity

16



 [/STM32](https://www.facebook.com/STM32)

 [@ST\\_World](https://twitter.com/@ST_World)

 [community.st.com](https://community.st.com)



[www.st.com/stm32hardwaretools](https://www.st.com/stm32hardwaretools)