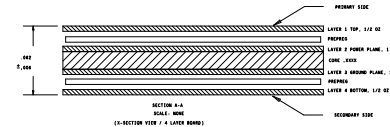
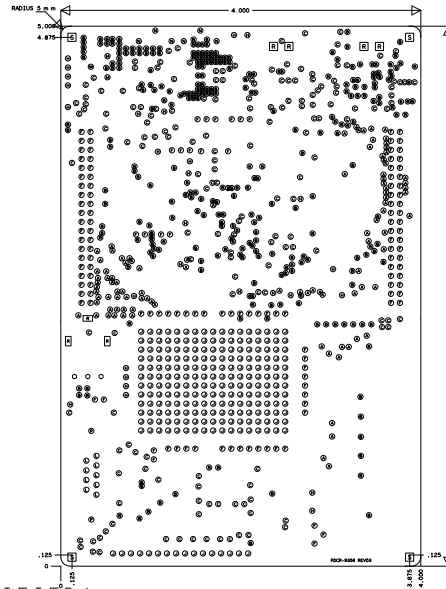



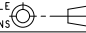
REVISIONS			
REV	DESCRIPTION	DATE	APPROVED
1	INITIAL RELEASE	10/13/10	RKAD
2	MODIFIED CTS, RTS	01/28/11	RKAD
*A	CORRECTED RTS, CTS	01/28/11	RKAD
*B	ADDED EOS PROTECTION CIRCUITS ON EBK CONNECTORS. ADDED C84 & C55. CHANGED FOOTPRINT POT R56. ADDED J43 & J44.	02/13/12	RKAD

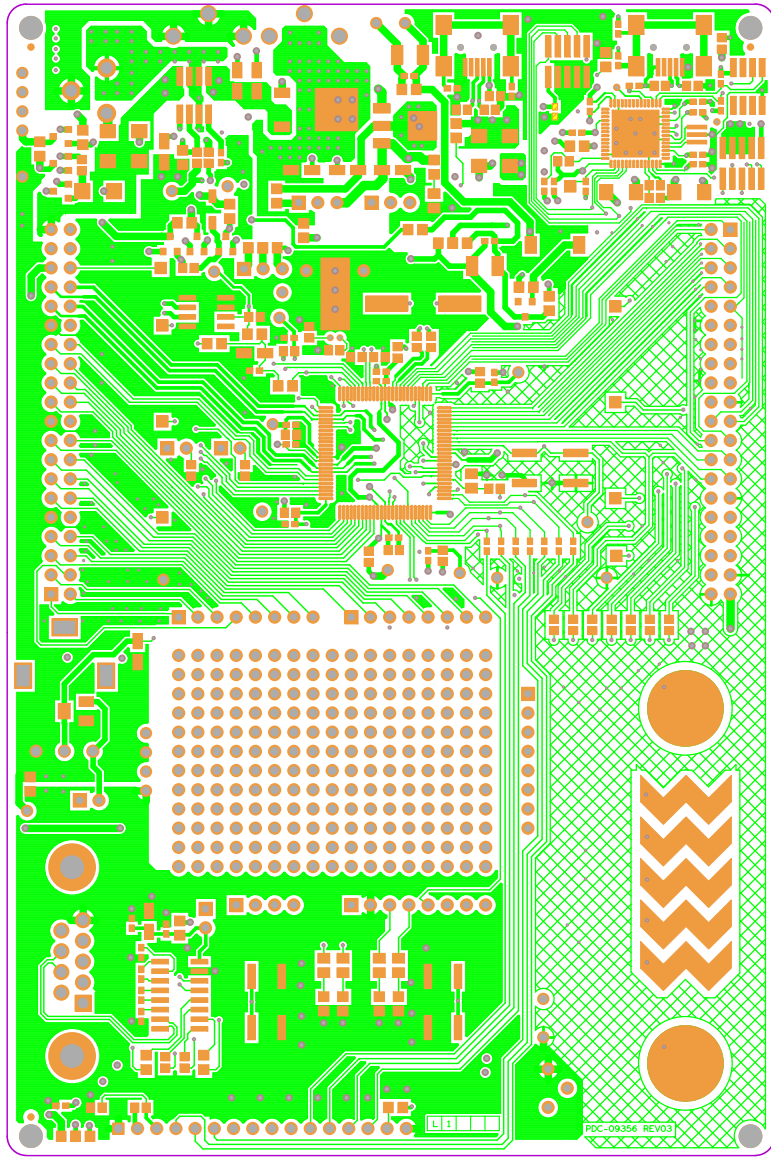


DRILL CHART: TOP to BOTTOM				
ALL UNITS ARE IN MILS				
FIGURE	SIZE	TOLERANCE	PLATED	QTY
•	8.0	+3.0/-3.0	PLATED	99
•	12.0	+3.0/-3.0	PLATED	295
•	20.0	+3.0/-3.0	PLATED	169
•	40.0	+3.0/-3.0	PLATED	138
•	43.0	+3.0/-3.0	PLATED	28
•	47.0	+3.0/-3.0	PLATED	220
•	51.0	+3.0/-3.0	PLATED	3
•	56.0	+3.0/-3.0	PLATED	9
•	64.0	+3.0/-3.0	PLATED	3
•	70.0	+3.0/-3.0	PLATED	6
•	125.0	+3.0/-3.0	PLATED	2
□	36.0	+3.0/-3.0	NON-PLATED	4
□	125.0	+3.0/-3.0	NON-PLATED	4
□	106.299x62.992	+3.0/-3.0	PLATED	1
□	106.299x62.992	+3.0/-3.0	PLATED	2

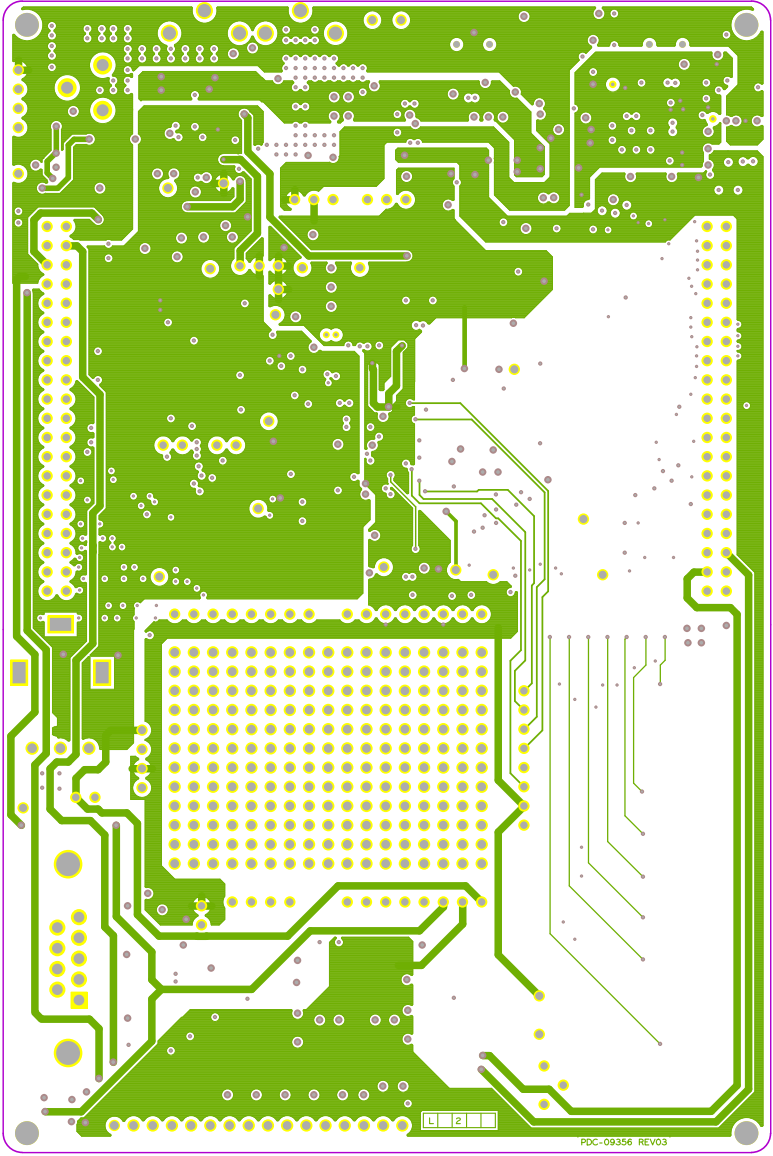
# NOTES:(UNLESS OTHERWISE SPECIFIED)

- RoHS COMPLIANT CERTIFICATION OR MATERIAL DECLARATION REQUIRED
- MATERIAL:
  - IS410 OR EQUIVALENT. MATERIAL MUST CONFORM TO UL94V-0.
  - USE HTE COPPER, AS SPECIFIED IN THE CROSS SECTION DIAGRAM
  - OVERALL METAL TO METAL THICKNESS AS SPECIFIED IN THE CROSS SECTION
- DRILLING:
  - DIAMETERS IN DRILL TABLE ARE FINISHED HOLE SIZES +/- .003 to 1. UNLESS OTHERWISE SPECIFIED IN DRILL TABLE.
  - TEARDROP ALLOWED ON ENTRY OF VIA ON EVERY TRACE LAYER.
- PLATING:
  - COPPER PLATING IN THRU-HOLES .001 min.
- MARKING:
  - SILKSCREEN IN WHITE NON-CONDUCTIVE EPOXY INK ON PRIMARY SIDE OF THE BOARD OR BOTH SIDES IF APPLICABLE.
  - FABRICATOR TO PLACE DATE CODE AND LOGO ON SECONDARY SIDE IN ETCH (PREFERRED) OR SILKSCREEN.
- FINAL FABRICATION:
  - SOLDRMASK PRIMARY AND SECONDARY SIDE OF BOARD USING LIQUID PHOTOIMAGABLE MASK MATERIAL OVER BARE COPPER. PER IPC-SM-840. MASK ARTWORKS PROVIDED ARE 1:1. SOLDERMASK COLOR \*\*BLACK\*\*
- FINISH:
  - SHALL BE ELECTROLYTIC NICKEL/GOLD. ELECTROLESS NIKEL / IMMERSION GOLD. (ENIG)
  - NICKEL THICKNESS: 100-200 MICROINCHES.
  - GOLD THICKNESS: 3-10 MICROINCHES.
- BOARDS SHALL BE PURCHASED FROM UL RECOGNIZED VENDORS ONLY AND SHALL BE MARKED IN COPPER ON SECONDARY SIDE OF BOARD WITH VENDORS UL IDENT. FLAMABILITY RATING (94-V0), DATE CODE (WWYY), AND RoHS COMPLIANT SYMBOL.
- MANUFACTURE BOARD TO BE IN ACCORDANCE WITH PERFORMANCE STANDARD IPC-6011/6012 CLASS 2 BOARD TO BE INSPECTED PER IPC-600-A CLASS 2.
- MAXIMUM WRAP OR TWIST SHALL NOT EXCEED .010 in/in.
- TESTING:
  - FABRICATOR TO ADD TEST STRUCTURES OR CUPONS AS NEEDED.
  - T-LINE IMPEDENCE TO BE TESTED OR GURANTEED WITHIN 10% IF SPECIFIED IN THE CROSS SECTION. TOLERANCE TO BE +/-10% UNLESS OTHERWISE SPECIFIED.

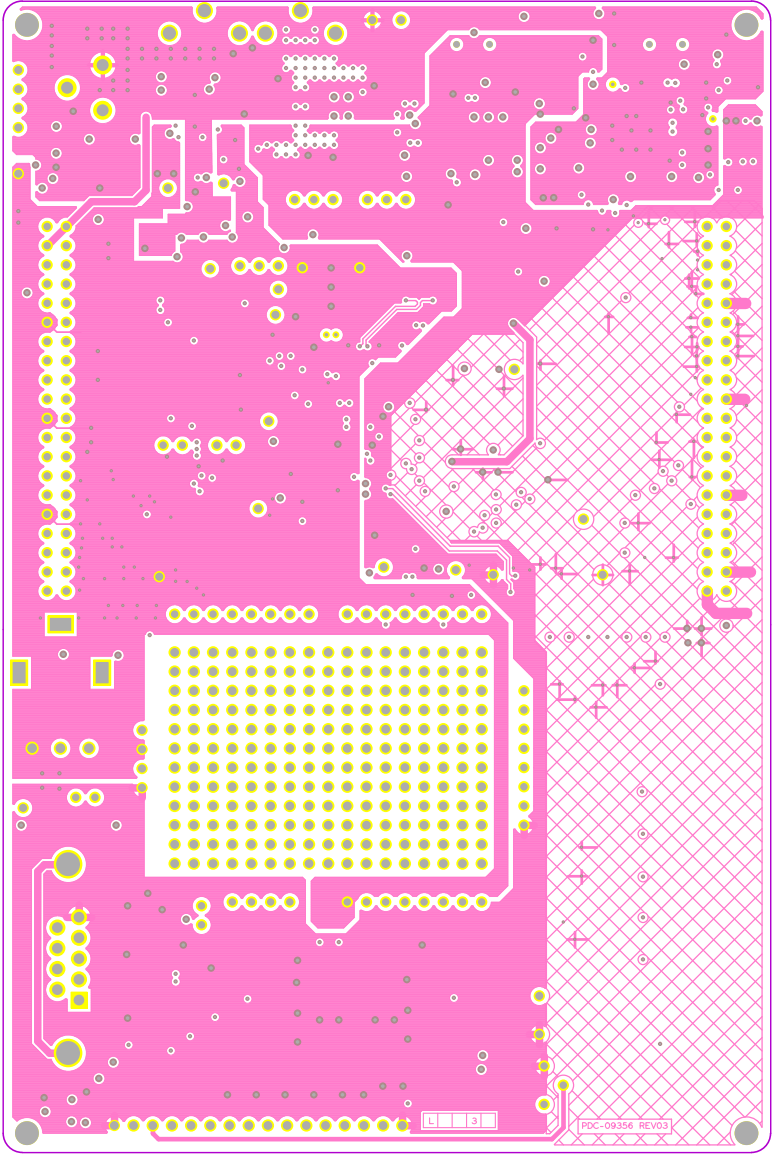
UNLESS OTHERWISE SPECIFIED		SIGNATURES		DATE	COMPANY:  CYPRESS SEMICONDUCTOR		198 CHAMPION COURT SAN JOSE, CA 95134 (408) 943-2600	
DIMENSIONS ARE IN INCHES TOLERANCES ON: ANGLES +/- .2 2 PL DECIMALS +/- .010 3 PL DECIMALS +/- .005 THIRD ANGLE PROJECTIONS 		DRAWN : ZMK		02/13/12	FABRICATION DRAWING CY8CKIT-050 PSOC 5 Development Kit			
		CHECKED : RKAD		02/13/11				
		ENGRG : PAVA		02/13/11				
		ISSUED						
CYPRESS PROPRIETARY					SIZE	FSCM NO	DWG NO	REV
THIS DOCUMENT CONTAINS CONFIDENTIAL, PROPRIETARY INFORMATION THAT IS CYPRESS SEMICONDUCTOR PROPERTY. DO NOT DISCLOSE TO OR DUPLICATE FOR OTHERS EXCEPT AS AUTHORIZED BY CYPRESS.					C		PDC-09356	*B
					SCALE: 1/1		SHEET: 1 OF 1	



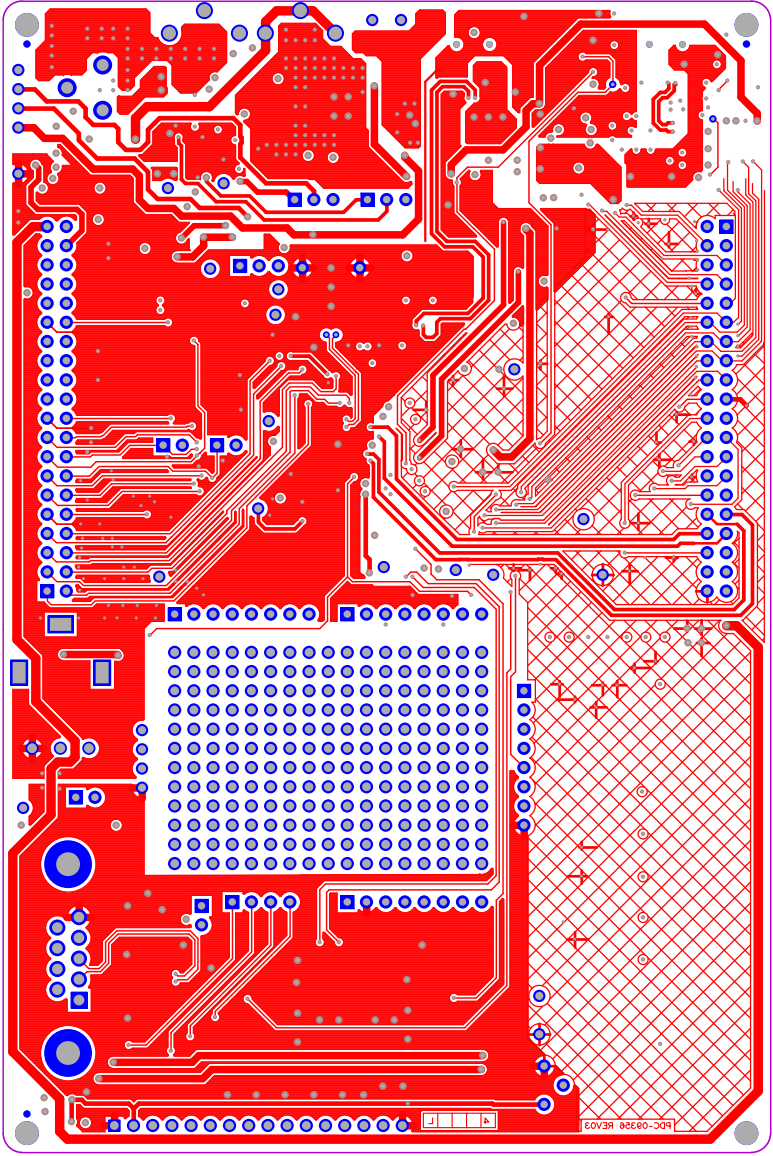
PDC-00356 REV03 SECONDARY SIDE



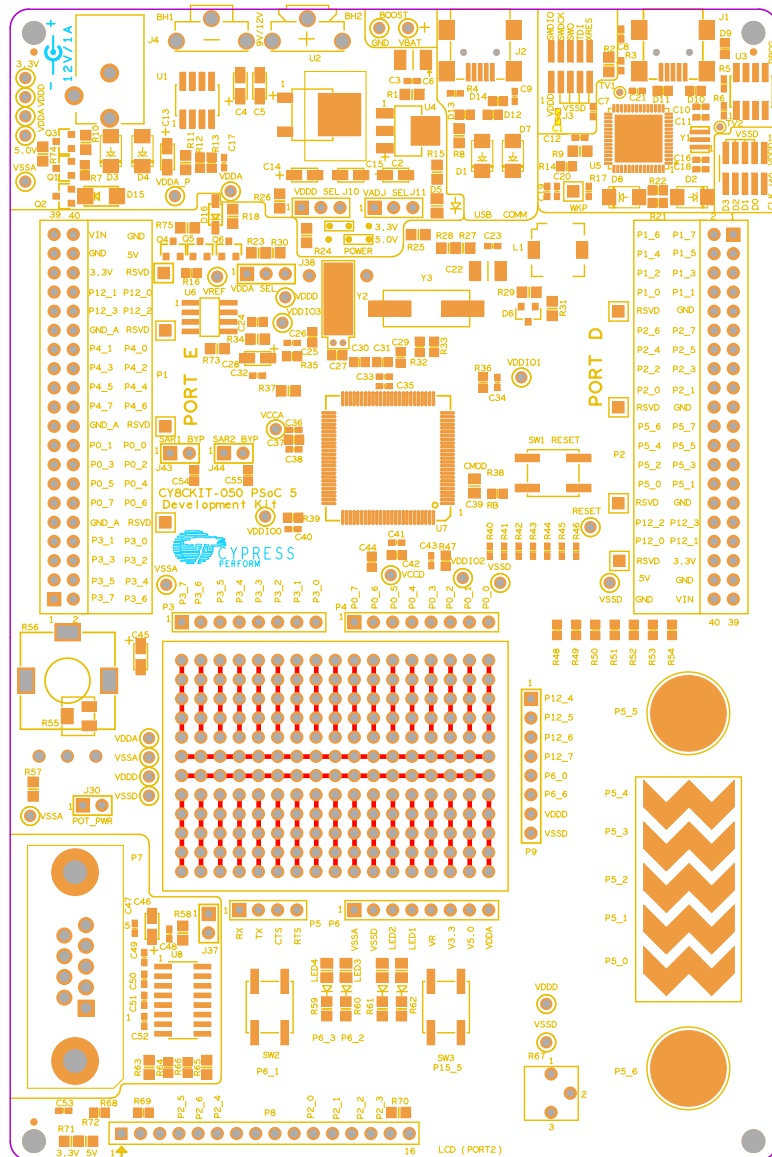
PDC-09356 REV03 SECONDARY SIDE



PDC-09356 REV03 SECONDARY SIDE



PDC-00326 REV03 SECONDARY SIDE



PDC-09356 REV03 PRIMARY SILKSCREEN

PDC-00350 REV03 SECONDARY SILKSCREEN

